

INSTRUMENT APPROACH CHART - ICAO

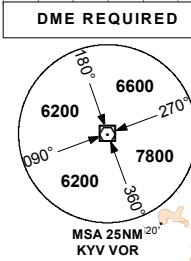
AERODROME ELEV 3950'
 HEIGHTS RELATED TO THR RWY 02 - ELEV 3899'

KIMBERLEY TWR: 118.20
 APRON: 122.65
 BLOEMFONTEIN APP: 119.40

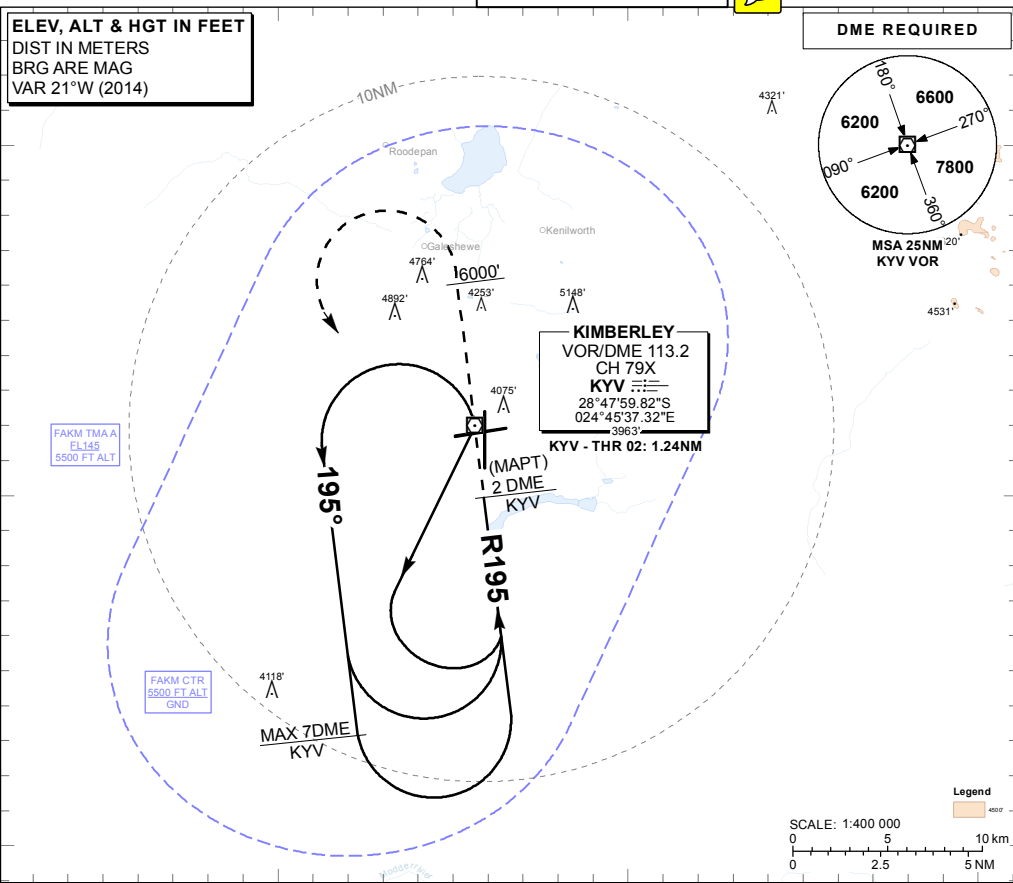
KIMBERLEY VOR RWY 02
 CAT A - D



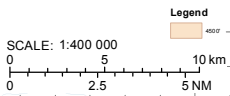
ELEV, ALT & HGT IN FEET
 DIST IN METERS
 BRG ARE MAG
 VAR 21°W (2014)



28°40'S
 28°50'S
 29°0'S



KIMBERLEY VOR/DME 113.2 CH 79X
KYV
 28°47'59.82"S
 024°45'37.32"E
 3965'
 KYV - THR 02: 1.24NM

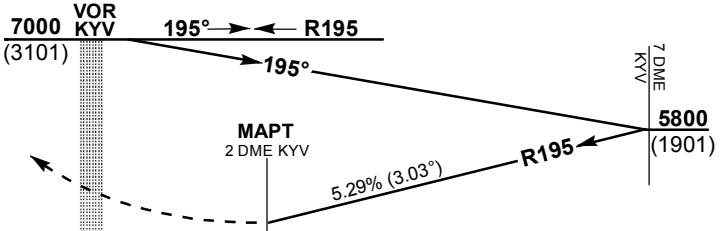


	24°40'E			24°50'E			25°0'E		
KYV DME	7	6	5	4	3				
ADVISORY ALT(HGT)	5800 (1901)	5480 (1581)	5160 (1261)	4840 (941)	4520 (621)				

TRANSITION ALT 7000
TRANSITION LEVEL ATC

INA ALT: 7000 or higher MSA

MISSED APPROACH:
 Climb to 6000FT ALT.
 At 6000FT ALT turn left direct to VOR KYV. Hold at 7000FT ALT.



THR ELEV 3899
 NM to/from THR RWY 02

CHANGE: OCA (H)

			GS	KT	80	100	120	140	160			
OCA (H)	A	B	C	D	7 DME to THR	M:S	4:19	3:27	2:53	2:28	2:10	
Straight-in Approach	VOR	4260 (361)	4260 (361)	4260 (361)	4260 (361)	Rate of descent	FPM	429	536	643	750	857
Circling	Circle to land at the discretion of the pilot in command											

NOTE:
 1. Procedure Turn Approach applicable only within 30° of the Outbound Heading. Use phraseology "Request Procedure Turn Approach".
 2. RoD from 7 DME KYV computes at 3.03%.